

HATCH

Social Story

Your guide to arriving at the theatre and attending the show.



The show is on at **BATS Theatre**, 1 Kent Terrace, Wellington.
The front door to BATS is off the sidewalk and has three steps up to it.



The **accessible entrance** is to the left of the front door:



Come up the ramp...



...and through this door.



You can let the team at BATS know your access needs here:

bats.co.nz/about-bats/accessibility

Through the accessible door, you arrive in the **foyer** area.



Through the front door, you will first see the **bar** (to the right).



Straight ahead from the front door, and to the left of the bar, you'll find the **Box Office**.

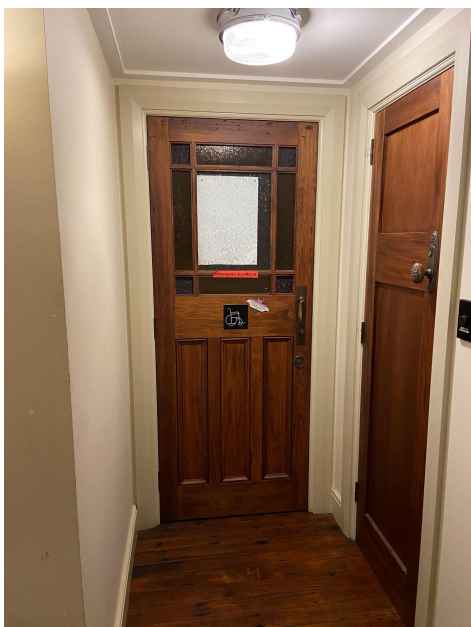


At the Box Office, you can buy tickets, pick up pre-purchased tickets, or ask questions! They are very helpful and friendly here.

The **toilets** are located in this short corridor. The toilets at BATS are gender neutral meaning anyone can use any toilet.



The accessible toilets are on the other side of the hallway, to the left of the theatre entrance.



HATCH is on in **The Heyday Dome**, which you can get to by walking up two flights of stairs. The first set of stairs is opposite the Box Office and will take you to the first floor landing.



Once you get to the first floor landing, turn left and go up this set of stairs to get to the theatre doors



On the first floor landing is also a single bathroom through the door directly opposite the stairs (pictured above). This door is quite heavy so be careful closing it behind you.



Up the second flight of stairs, just before you get to The Heyday Dome, and down this short corridor is another set of bathrooms.



This is The Heyday Dome. There are rows of fold-down seats with stairs up either side. At the front is the stage, this is where the show will happen. When you arrive, you will be on the left side of the seating block and you can walk into the theatre to choose your seats. The theatre lights will be on so you can see where to go.

The stage will be empty when you arrive.

Show Synopsis

There are five sections to this show. Each section is about 10 - 15 minutes long and there will be short, 5 minute breaks in between the sections so the actors can swap over. The full show including the breaks will run for approximately 100 minutes.

Content Forecast

- Flashing lights
- Haze from a smoke machine

- Loud bass, sounds of gunshots and explosions
- Falling piles of boxes
- Picture of mokomokai (preserved head of a Māori person). This will be hidden from view. You can look at it if you'd like.
- Coarse language
- Discussions of Matetanga - the dead, and domestic violence
- Fast/flashing projected images

HATCH is a solo show split into five sections which means there is only one actor at a time but there are five different actors that will perform in the show. In between each section, the actors and designers will move around the space. The facilitator Emma will introduce each piece and its sensory highlights and content warnings. She looks like this...



Meet the Performers and their shows

Section 1 - Manuia le po, manuia le aso

This is Gideon Smith, he is the actor and creator of Manuia le po, manuia le aso. This is what Gideon looks like with their costume on...



This piece is split into 3 Acts, the stage is blacked out and Gideon shines a flashlight between acts. There is very little speaking in the first 2 acts. In the 1st act, Gideon uses his body to tell the story and the feelings of his characters. In his 2nd act, he dances through a form called crump. The 3rd act is a spoken piece from his father's life view.

Sensory Highlights

This show has some moments of high sensory action to look out for including:

- Loud bass and music. You can block your ears if you would like.
- Flashing images that are projected onto the back wall. You can close or cover your eyes if you'd like.
- Audience interaction. Gideon asks the whole audience and individuals in the front row for input. You don't have to sit in the front row, interact vocally or physically if you are uncomfortable.

If at any time you feel uncomfortable and would like to leave the theatre, you can stand up and walk out of the theatre and have a break in the foyer area. The friendly staff at BATS will help you to come back into the theatre when you're ready.

At the end of this section Gideon will bow. The audience will clap to show appreciation and thank Gideon for performing. You can join in, or cover your ears if you'd like.

Section 2 - Plug

This is Isaac Hooper, he is the actor and creator of *Plug* in HATCH.
This is what Isaac looks like in his costume...



This piece has lots of sound that Isaac makes with his voice and a machine attached to his body. He explores communication after having a brain injury from concussion through sound and vocals.

Sensory Highlights

This show has some moments of high sensory action to look out for including:

- Loud noises. Isaac is making sounds in real time, sometimes this might go wrong and loud noises might happen. You can block your ears if you'd like.
- UV light. This makes some colours glow bright. This might mean people's clothes will glow, or their nail polish. Don't worry, this is because of a UV light on the roof. You can cover your eyes if you'd like.

- Audience Interaction. Isaac will ask all of the audience to repeat after him to make a song. You can join in if you'd like, you can sing what he does or you can make any noise you want. You can cover your ears if you'd like.

If at any time you feel uncomfortable and would like to leave the theatre, you can stand up and walk out of the theatre and have a break in the foyer area. The friendly staff at BATS will help you to come back into the theatre when you're ready.

At the end of this section Isaac will bow. The audience will clap to show appreciation and thank Isaac for performing. You can join in, or cover your ears if you'd like.

Section 3 - The Collector

This is Parekawa Finlay, she is the actor for *The Collector* in HATCH. This is what Parekawa looks like in her costume...



Parekawa plays 3 different characters that aren't herself. When she is holding a taiaha, she is playing a Māori warrior. When she is dressed in a te papa vest, she is a te papa historian. When she has purple light on her, she is a tattoo artist. She is sharing the story of Horatio Gordon Robley from the perspective of a Māori wahine.

Sensory Highlights

This show has some moments of high sensory action to look out for including:

- Sounds of guns and explosions. At the start of Parekawa's piece there are three explosion noises. These are recordings. Parekawa hits piles of boxes over to show what it would've done to a real wall. This might give you a fright. You can cover your eyes and ears if you'd like.
- Discussion of Matetanga - the dead. Parekawa describes a picture that includes preserved heads of dead Māori. We understand this content might be distressing. You can cover your eyes if you'd like.

If at any time you feel uncomfortable and would like to leave the theatre, you can stand up and walk out of the theatre and have a break in the foyer area. The friendly staff at BATS will help you to come back into the theatre when you're ready.

At the end of this section Parekawa will bow. The audience will clap to show appreciation and thank Parekawa for performing. You can join in, or cover your ears if you'd like.

Section 4 - Unpredictable Mind

This is India Worsnop, she is the actor for *Unpredictable Mind* in HATCH. This is what India looks like in costume...



India's character is called Mens. She talks to a voice that plays over the speaker, this is a recording.

Sensory Highlights

This show has some moments of high sensory action to look out for including:

- Loud bass. Sometimes there is a powering down sound that can be loud. It also might feel like it's vibrating your ears. You can cover your ears if you'd like.
- Coarse language. Mens says swear words sometimes. We understand this might be distressing, you can cover your ears if you'd like.

- Haze from a haze machine

If at any time you feel uncomfortable and would like to leave the theatre, you can stand up and walk out of the theatre and have a break in the foyer area. The friendly staff at BATS will help you to come back into the theatre when you're ready.

At the end of this section India will bow. The audience will clap to show appreciation and thank India for performing. You can join in, or cover your ears if you'd like.

Section 5 - CAUTION: WET FLOOR

This is Jackson, he is the actor and creator of *CAUTION: WET FLOOR* in HATCH. This is what Jackson looks like in costume.



There are no spoken words in this piece. Sometimes Jackson makes sounds with his mouth that sound like mumbled words.

Sensory Highlights

This show has some moments of high sensory action to look out for including:

- Loud sound
- Low level audience interaction. Jackson may ask an individual for a vocal response or nod. You don't have to sit in the front row, interact vocally or physically if you are uncomfortable.
- Haze from a haze machine

If at any time you feel uncomfortable and would like to leave the theatre, you can stand up and walk out of the theatre and have a break in the foyer area. The friendly staff at BATS will help you to come back into the theatre when you're ready.

At the end of this section Jackson will bow. The audience will clap to show appreciation and thank Jackson for performing. You can join in, or cover your ears if you'd like.

Finale

When the show has finished, Emma will invite all the actors and designers onto the stage to bow, people may clap their hands. You can clap too to thank everyone for their work, or you can cover your ears if you'd like. The lights will come back on and everyone will stand up and collect their things and leave the theatre. We understand that lots of people moving at once can be overwhelming. You can stay in your chair until you are comfortable to leave if you'd like.

We hope you enjoy the show!